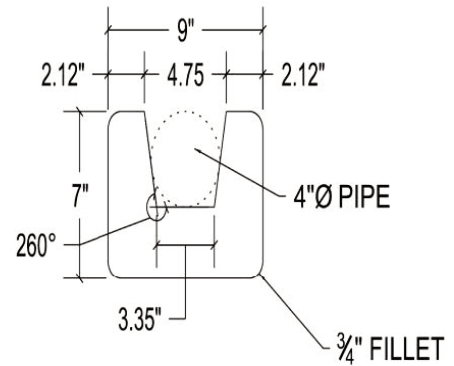
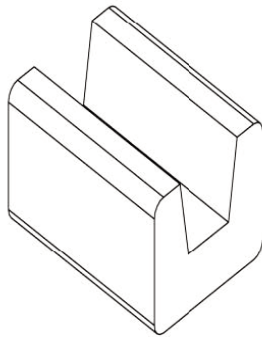
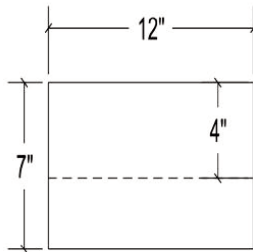
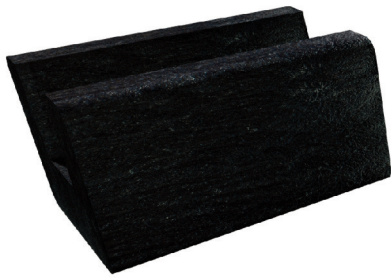


STRUXURE®

PIPE SUPPORTS



STRUXURE® PIPE SUPPORTS

9" (wide) x 12" (long) x 7" (high) - SUPPORTS 4" PIPE

Available in custom lengths and dimensions

The same technology used in our STRUXURE® Construction Mats is now available for rugged, industrial strength STRUXURE® Pipe Supports.

- Available pre-cut to support surface mounted pipes of various diameters
- Will not absorb or release chemicals and contains no toxic chemicals